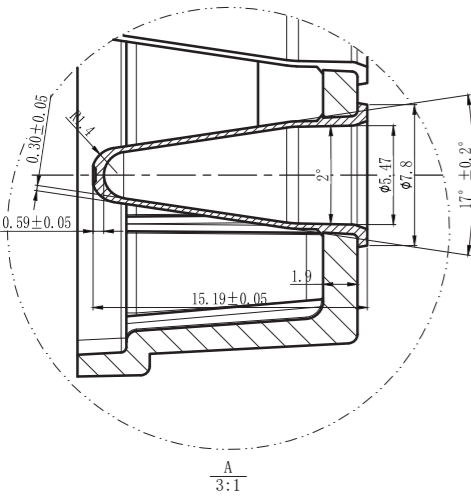


PCR PLATE

Hard-Frame 0.1 ml 96 Well Full Skirted PCR Plate



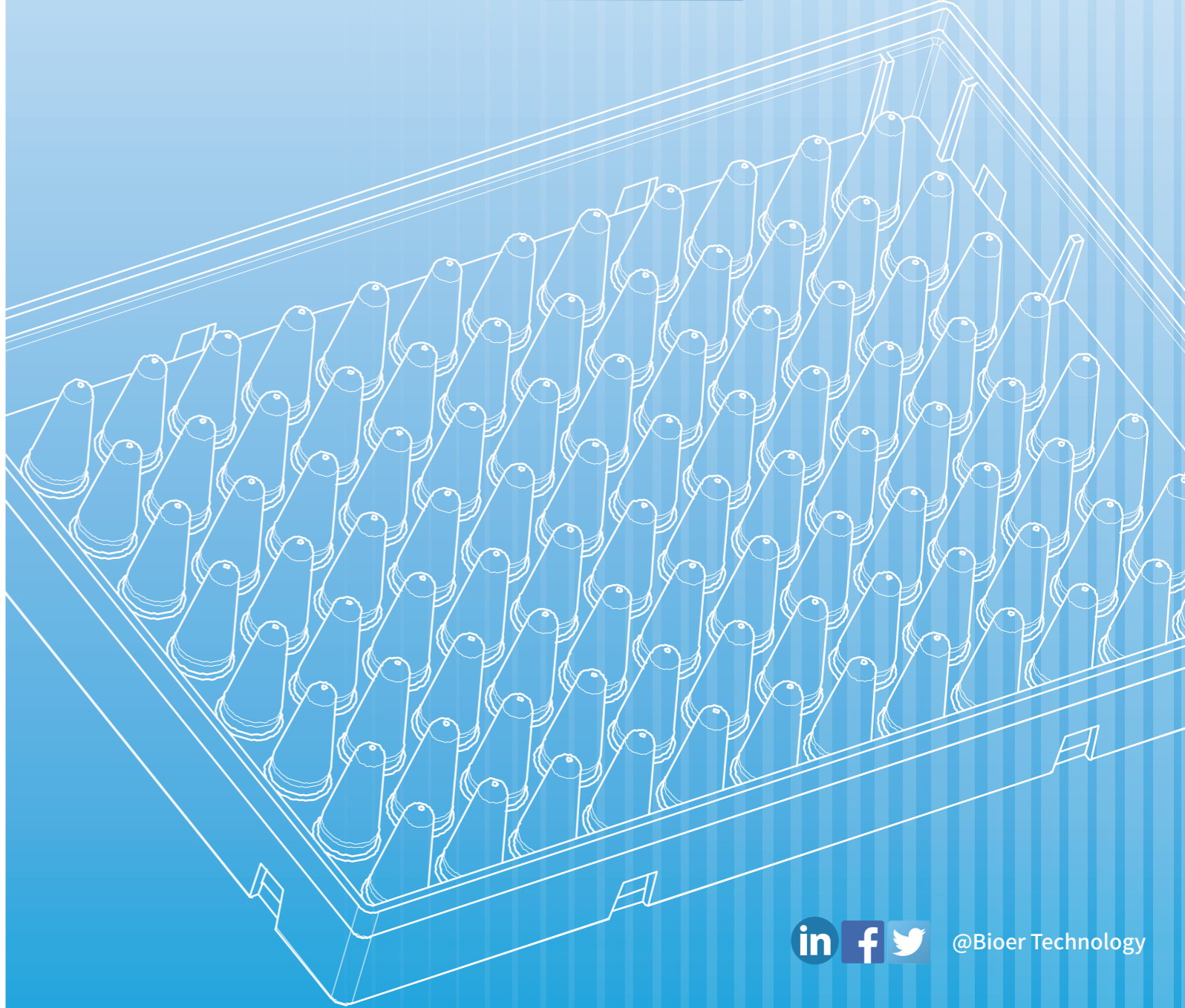
Unit: mm	Dimension
Length	127.5±0.2
Width	85.3±0.2
Total height	16.05
Well depth	14.5
Well diameter	5.47
Well diameter at bottom of conical section	2.5mm
Well capacity	220µL
Working volume	≤100µL
Well space	9±0.05
Well angle	17.5°
The center of the A1 well to the left edge	14.25
The center of the A1 well to the top edge	11.15
Center of A1 to center of A12	99±0.15
Center of A1 to center of H1	63 ±0.15

Ordering Information:

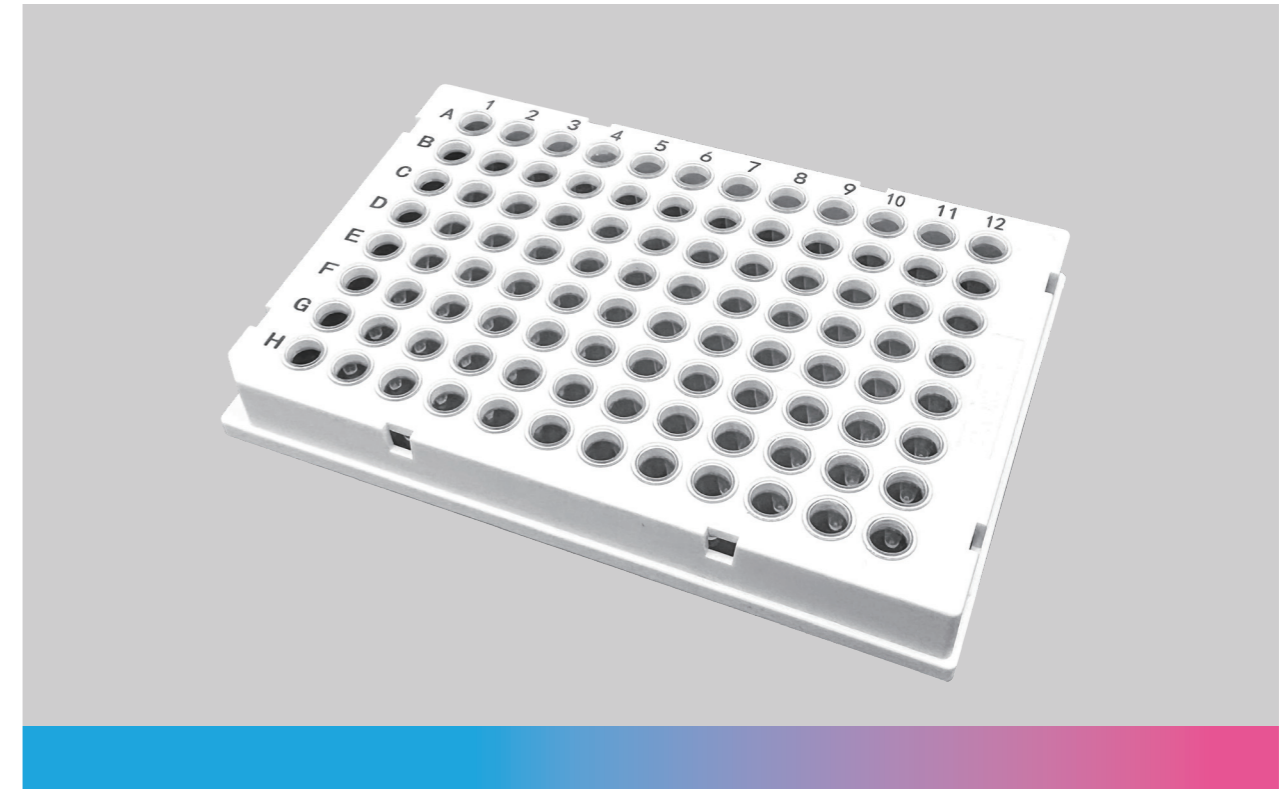
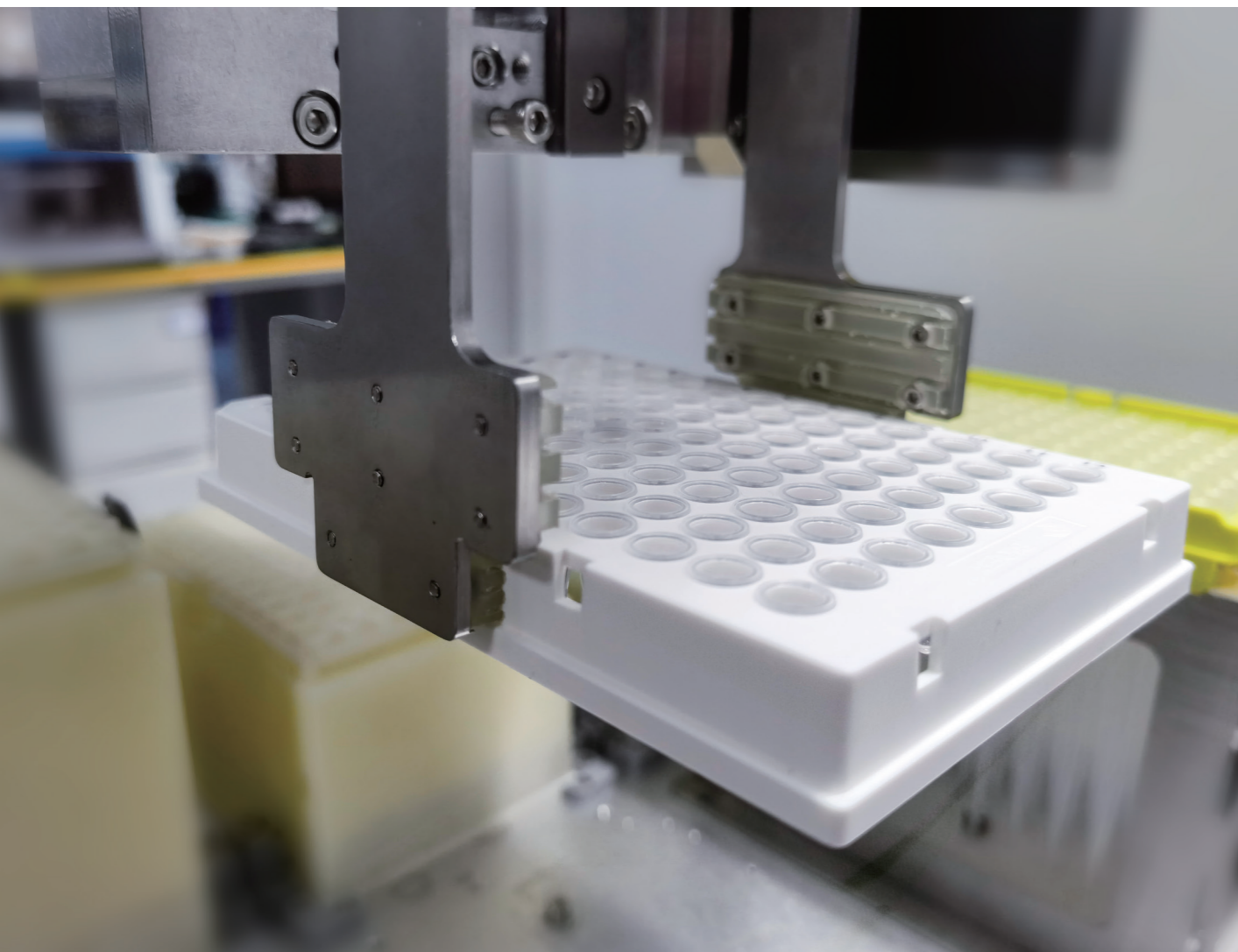
Product Name	Cat#	Working Volume	Description	Package
Hard-Frame 0.1 ml 96 Well Full Skirted PCR Plate	BSH134S1W	≤100uL	clear well, white frame	10 pieces/box, 12 box/bags

BIOER TECHNOLOGY Add: 1192 Bin An Rd., Hi-tech (Binjiang) District, Hangzhou, 310053, P.R.China Web: www.bioer.com
 Tel: +86-571-87774513 Fax: +86-571-87774553 E-Mail: reagent@bioer.com.cn E-Date: 2024.04

BR-2024-WH-C-H134



Hard-Frame 0.1 ml 96 Well Full Skirted PCR Plate



Introduction:

The hard-frame 0.1 ml 96 well full skirted PCR Plate are specifically designed for automated high-throughput liquid handling. They feature a dual-material, dual-color, high-hardness design that prevents warping or deformation during thermal cycling. With sturdy, uniform, and durable characteristics.

Key Features:



Dual-material combining a polycarbonate frame and polypropylene wells for optimized performance and high rigidity.



Anti-warping characteristics provide durability during automation, high temperatures, high-speed centrifugation, and storage periods.



Extremely thin-walled polypropylene wells guarantee optimized heat transfer to the sample.



Manufactured in a Class 100,000 cleanroom to ensure the product is free from heat sources, endotoxins, DNase, RNase, and human DNA.



Excellent stability and flatness allowing for precise positioning and robotic handling.



Sturdy plate design, ideal for rapid heating and cooling.



Black alphanumeric labeling facilitates easy identification.



Comply with ANSI/SBS standard dimensions.